



# YARMOUK UNIVERSITY

## HIJJAWI FACULTY FOR ENGINEERING TECHNOLOGY



**Established**  
in 1984



**8 Engineering Departments**  
(11 Bachelors / 6 Masters)



**Engineering Graduates**  
26000+



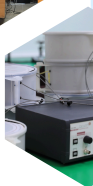
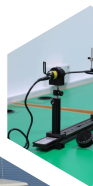
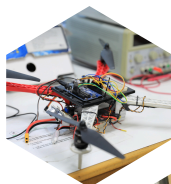
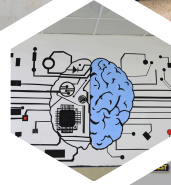
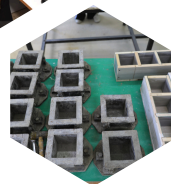
**Academic Staff**  
125+



**Staff & Engineers**  
75+




وحدة التأهيل الوظيفي  
Career Development Unit





# كلية الحجاوي للهندسة التكنولوجية Hijjawi Faculty for Engineering Technology

**WANT TO BECOME  
A HIJJAWI STUDENT?**



The Hijjawi Faculty for Engineering Technology at Yarmouk University is one of the most dynamic and comprehensive engineering faculties in the region, offering **11 undergraduate** and **6 graduate degree** programs across **8 specialized departments**.

Whether you're passionate about sustainable infrastructure, smart technologies, biomedical systems, energy solutions, or engineering management, **you'll find a program tailored to your interests and goals**. With a strong emphasis on applied learning, interdisciplinary collaboration, and real-world impact, the Hijjawi Faculty prepares students at all levels to thrive in today's competitive engineering landscape.

**NO MATTER WHAT YOUR ENGINEERING FOCUS IS,  
THERE'S A PLACE FOR YOU HERE.**



# WHAT DRIVES HIJJAWI FACULTY?

## VISION

Towards a distinct faculty of teaching and research exists among 500 best colleges in the world in the various fields of engineering.

## OBJECTIVES

- Provide high-quality education in line with the latest developments in the various fields of science and engineering.
- Achieve partnership with industry to prepare qualified graduates to work efficiently in this sector.
- Establish research centers to get familiar with the community needs and work to find effective solutions to these needs.
- The presence as a strong competitor in the field of scientific research in the world, through the quantity and quality of scientific publications and patents issued by the faculty.



## MISSION

Excellence in teaching, scientific research and community service through the provision of high-quality education in line with the latest developments in various fields of science and engineering, and closely linked with industry as well as various community needs.



## VALUES

The faculty seeks to prepare the graduate to be a good person, loyal to his country and nation, and producer in his community, through a focus on fine-tuning the student's personality, the development of his inclinations, encouraging the aspects of creativity in him, and the development of his moral aspect, which contribute to the preparation of the elites and the leaders of the future.



**AT THE HIJJAWI FACULTY, WE'RE NOT JUST PREPARING ENGINEERS — WE'RE EMPOWERING THE NEXT GENERATION OF CHANGEMAKERS READY TO LEAD THE FUTURE OF ENGINEERING IN JORDAN, THE REGION, AND BEYOND.**

# WHY GET MY ENGINEERING DEGREE @ HIJJAWI FACULTY?

## Accredited, Cutting-Edge Programs

A wide range of engineering programs aligned with market needs - most accredited by the EAC of ABET, with the rest scheduled for accreditation by graduation of their first cohorts.

## Hands-On Learning & Real-World Training

Strong emphasis on lab work, design studios, and mandatory full-time field training with tech companies in smart industries, digital health, and connected infrastructure.

## Distinguished Faculty & Mentorship

Faculty members with rich academic and industry experience, dedicated to student success through mentorship and collaborative research.

## Global Projects & Industry Exposure

Active participation in local and international projects, fostering innovation, teamwork, and global engagement.

## Advanced Labs & Learning Facilities

Access to state-of-the-art labs, maker spaces, and engineering studios that support technical exploration and experimentation.

## Career & AI Skills Development

Programs include four career development courses to strengthen technical and soft skills starting in the first year, plus a mandatory, hands-on Artificial Intelligence course in Year 2, tailored for engineering applications.

## Student Societies & Campus Life

A vibrant student life with engineering clubs, competitions, professional societies, and campus events in the academic heart of Irbid.

## Certification Flexibility

Students can waive up to three electives by earning internationally recognized certifications, tailoring their academic paths to their strengths.

## Language Skills for Global Readiness

Programs integrate foreign language courses to help students pursue international careers and academic opportunities.

## Entrepreneurial Spirit & Graduate Impact

Strong support for entrepreneurial ventures, innovation, and a proven track record of producing highly skilled graduates who drive national and regional development.



# WHY GET MY MASTER'S DEGREE @ HIJJAWI FACULTY?

## Specialized Master's Programs

Choose from six cutting-edge Master's programs in:

Wireless Communication Engineering, Computer Engineering, Electrical Power Engineering, Biomedical Systems & Informatics, Engineering Management, and Construction Engineering & Management.

## Research-Driven Learning

Our programs are deeply rooted in research. Students actively engage in real-world projects tackling pressing challenges in sustainability, digital systems, biomedical tech, and smart infrastructure.

## Innovation & Advanced Labs

Access high-tech labs and collaborative research centers for your thesis, research assistantships, or faculty-led projects - many linked to national and international initiatives.

## Industry & Academic Collaboration

Work closely with faculty and partners from leading industries and national institutions. Bridge theory with application and grow your professional network.

## Flexible Learning for Busy Professionals

Programs are designed with flexibility in mind - ideal for working engineers or those pursuing further academic goals.

## Expert Faculty Mentorship

Be guided by faculty who combine academic rigor with real-world engineering experience, helping you refine your skills and research impact.

## Global & Regional Relevance

Curricula aligned with local and international demands - preparing you to lead projects, drive innovation, or continue to PhD studies.

## Real Impact, Real Careers

Graduates move into high-level roles in industry, government, and academia - equipped with both technical excellence and leadership skills.



## DEGREE PROGRAMS BY DEPARTMENTS

### ELECTRONICS ENGINEERING DEPARTMENT

- Bachelor in Electronics and Robotics Engineering



### COMMUNICATION ENGINEERING DEPARTMENT

- Bachelor in Communication Engineering
- Master in Wireless Communication Engineering



### COMPUTER ENGINEERING DEPARTMENT

- Bachelor in Computer Engineering
- Bachelor in Computer Engineering / Internet of Things (IOT)
- Master in Computer Engineering



### ELECTRICAL POWER ENGINEERING DEPARTMENT

- Bachelor in Electrical Power Engineering
- Master in Electrical Power Engineering







## DEGREE PROGRAMS BY DEPARTMENTS

### BIOMEDICAL SYSTEMS AND INFORMATICS ENGINEERING DEPARTMENT

- Bachelor in Biomedical Systems Engineering
- Bachelor in Biomedical Informatics Engineering
- Master in Biomedical Systems and Informatics Engineering



### INDUSTRIAL ENGINEERING DEPARTMENT

- Bachelor in Industrial Engineering
- Master in Engineering Management



### ARCHITECTURAL ENGINEERING DEPARTMENT

- Bachelor in Architectural Engineering



### CIVIL ENGINEERING DEPARTMENT

- Bachelor in Civil Engineering
- Bachelor in Smart and Sustainable Cities Engineering
- Master in Construction Engineering and Management







**Biomedical Systems and Informatics  
Engineering Department**

**Industrial Engineering  
Department**

**Civil Engineering  
Department**

**Communication  
Engineering Department**

**Electrical Power  
Engineering Department**

**Electronics Engineering  
Department**

**Computer Engineering  
Department**



Career Development  
Unit

Architectural Engineering  
Department

3 BUILDINGS  
50+ LABORATORIES  
25+ CLASSROOMS

FACULTY HIGHLIGHTS

FROM DREAMS TO DEGREES:  
THE STUDENTS' EXPERIENCE



# TUITION FEES (Per Credit Hour)

## UNDERGRADUATE PROGRAMS

### Electronics and Robotics Engineering

Regular	Parallel	International
60 JOD	100 JOD	100 JOD

### Communication Engineering

Regular	Parallel	International
29 JOD	75 JOD	75 JOD

### Computer Engineering

Regular	Parallel	International
29 JOD	75 JOD	75 JOD

### Computer Engineering/IOT

Regular	Parallel	International
80 JOD	120 JOD	120 JOD

### Electrical Power Engineering

Regular	Parallel	International
29 JOD	75 JOD	75 JOD

### Biomedical Systems Engineering

Regular	Parallel	International
45 JOD	75 JOD	75 JOD

### Biomedical Informatics Engineering

Regular	Parallel	International
45 JOD	75 JOD	75 JOD

### Industrial Engineering

Regular	Parallel	International
50 JOD	90 JOD	90 JOD

### Architectural Engineering

Regular	Parallel	International
60 JOD	100 JOD	100 JOD

### Civil Engineering

Regular	Parallel	International
60 JOD	100 JOD	100 JOD

### Smart and Sustainable Cities Engineering

Regular	Parallel	International
90 JOD	150 JOD	150 JOD

## GRADUATE PROGRAMS (MASTER)

### Wireless Communication Engineering

Jordanian	International
80 JOD	300 USD

### Computer Engineering

Jordanian	International
80 JOD	300 USD

### Electrical Power Engineering

Jordanian	International
80 JOD	300 USD

### Biomedical Systems and Informatics Engineering

Jordanian	International
120 JOD	300 USD

### Engineering Management

Jordanian	International
120 JOD	300 USD

### Construction Engineering and Management

Jordanian	International
120 JOD	300 USD



# ACCREDITATIONS



Engineering  
Accreditation  
Commission

**ABET, Inc.**



The following degree programs are accredited by the Engineering Accreditation Commission of ABET, <http://www.abet.org>:

- Bachelor in Computer Engineering
- Bachelor in Electronics Engineering
- Bachelor in Industrial Engineering
- Bachelor in Communication Engineering
- Bachelor in Biomedical Systems Engineering
- Bachelor in Biomedical Informatics Engineering
- Bachelor in Electrical Power Engineering

The following degree programs have applied to obtain ABET accreditation:

- Bachelor in Architectural Engineering



## LOCAL ACCREDITATION

هيئة الاعتماد وضمان الجودة  
THE ACCREDITATION & QUALITY ASSURANCE COMMISSION

The following degree programs have applied to obtain the Local Accreditation by the Accreditation and Quality Assurance Commission, Jordan, <https://www.aqac.org.jo>:

- Bachelor in Computer Engineering
- Bachelor in Electronics and Robotics Engineering
- Bachelor in Industrial Engineering
- Bachelor in Communication Engineering
- Bachelor in Biomedical Systems Engineering
- Bachelor in Biomedical Informatics Engineering
- Bachelor in Electrical Power Engineering
- Bachelor in Architectural Engineering
- Bachelor in Civil Engineering

# EXPLORE HOW YOU ENGAGE



## Student Clubs & Societies



Engineering  
Accreditation  
Commission



## Hijjawi Faculty Newsletter





# EXPLORE HOW YOU ENGAGE

## CAREER DEVELOPMENT UNIT

The Hijjawi Faculty for Engineering Technology **CAREER DEVELOPMENT UNIT** is our students' career resource from first year through graduation.



- Workshops
- Events



- Training Courses
- Digital Support
- Corporate Engagement

## Our Strategic Partner:



"Empowering Students Through  
**Real-world Experience** and  
**Strategic Career Development**"

## THE CENTER OFFERS:

- Field Training Support
- Guidance and Mentorship
- Professional Development
- Mental Wellness Training

**ALIGN YOUR  
EDUCATION WITH THE  
FUTURE OF WORK**



**BE INSPIRED, GET HIRED**  
**REAL STUDENT STORIES TO MOTIVATE  
AND INSPIRE**

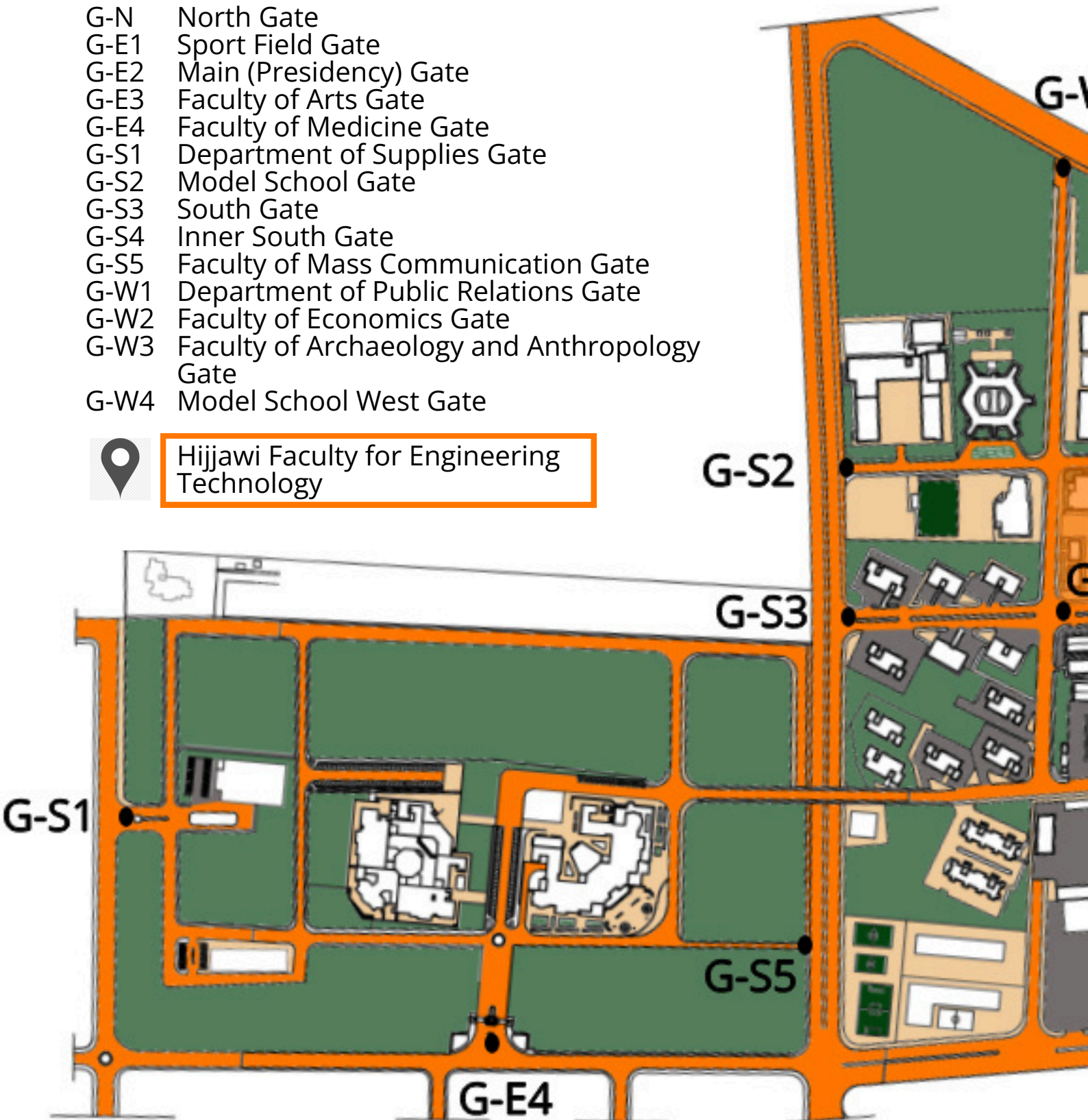


# HOW TO GET TO HIJJAWI FACULTY ?

- G-N North Gate
- G-E1 Sport Field Gate
- G-E2 Main (Presidency) Gate
- G-E3 Faculty of Arts Gate
- G-E4 Faculty of Medicine Gate
- G-S1 Department of Supplies Gate
- G-S2 Model School Gate
- G-S3 South Gate
- G-S4 Inner South Gate
- G-S5 Faculty of Mass Communication Gate
- G-W1 Department of Public Relations Gate
- G-W2 Faculty of Economics Gate
- G-W3 Faculty of Archaeology and Anthropology Gate
- G-W4 Model School West Gate



Hijjawi Faculty for Engineering Technology





W4



G-W3

G-W2

G-W1

G-S4

G-N

G-E2

G-E1

G-E3

0.00 m

100 m

200 m

300 m

400 m



## HIJJAWI FACULTY ON SOCIAL MEDIA



@Hijjawi-Faculty



hijjawi-faculty



hijjawi.yu.edu.jo



hijjawi\_faculty.24



### CONTACT US

<https://engineering.yu.edu.jo>  
[engineering.fac@yu.edu.jo](mailto:engineering.fac@yu.edu.jo)  
+962 2 721 1111 ext. 4251

